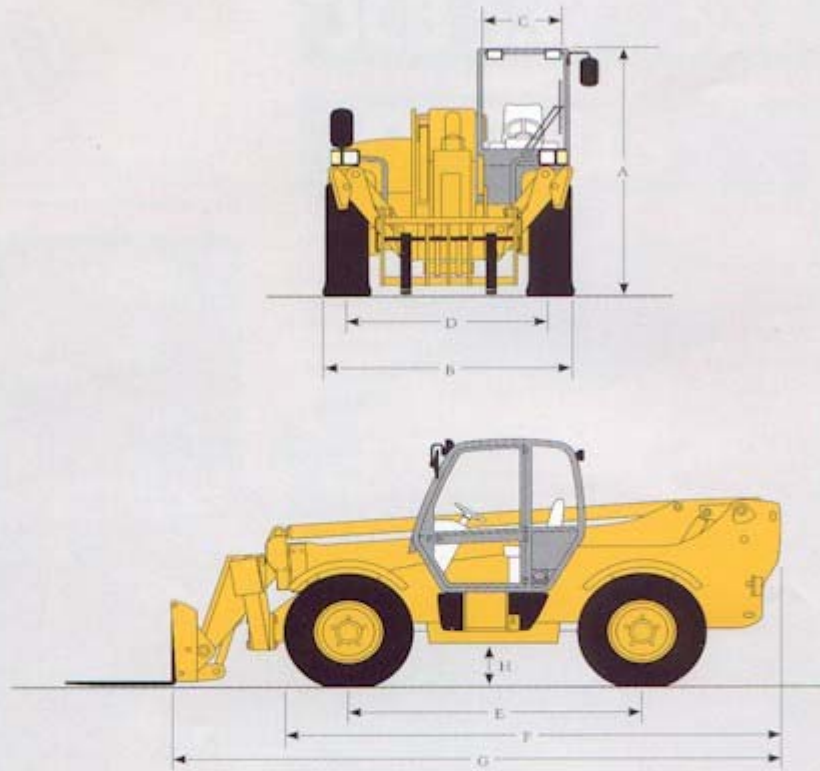


GENERAL SPECIFICATION

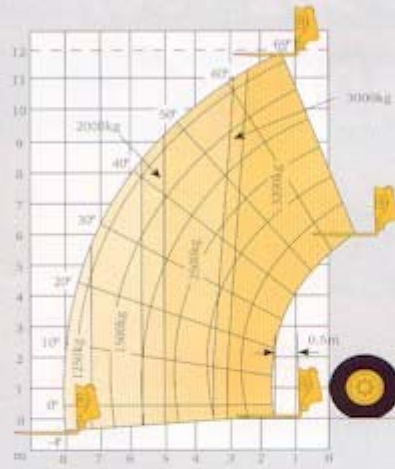
DIMENSIONS



STATIC DIMENSIONS	532		537	
A Overall height	2.59m	8' 6"	2.59m	8' 6"
B Overall width (over tyres)	2.35m	7' 8"	2.35m	7' 9"
C Inside width of cab	0.94m	3' 1"	0.94m	3' 1"
D Front track	1.90m	6' 3"	1.90m	6' 3"
E Wheelbase	2.75m	9' 0"	2.90m	9' 6"
F Overall length to front tyres	4.03m	13' 10"	5.18m	17' 0"
G Overall length to front carriage	5.54m	18' 2"	6.25m	20' 6"
H Ground clearance	0.40m	1' 4"	0.40m	1' 4"
Width over fully extended stabilizers	2.73m	9' 11"	2.73m	9' 11"
Overall length to stabilizers - retracted	5.39m	17' 8"	5.74m	18' 10"
Overall length to stabilizers - extended	5.42m	17' 10"	5.77m	18' 11"
Outside turn radius (over tyres)	4.0m	13' 2"	4.10m	13' 5"
Departure angle	35°		30°	
Weight	9140kg	20150lb	10340kg	22796lb
Tyres	15.5-26.5		15.5-25	

532-120 PERFORMANCE

WITH STABILISERS EXTENDED

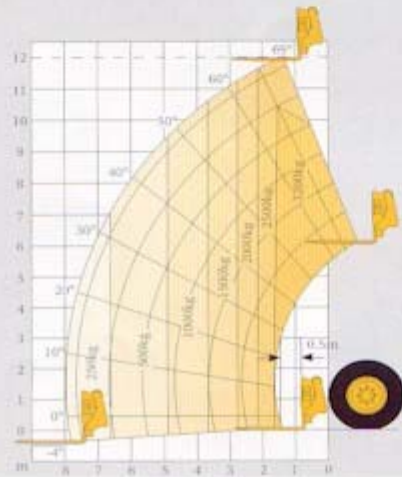


Maximum lift capacity	3200kg	7055lb
Lift capacity to full height	3200kg	7055lb
Lift capacity at full reach	1250kg	2746lb
Lift height	12.0m	39' 4"
Reach at maximum lift height	1.44m	4' 9"
Maximum forward reach	8.0m	26' 3"
Reach with 1 tonne load	0.0m	26' 3"
Placing height	11.42m	37' 6"

Complies with FEM stability test 4.001A

532-120 PERFORMANCE

CHASSIS LEVELLING*
WITH STABILISERS RETRACTED



Maximum lift capacity	3200kg	7055lb
Lift capacity to full height	2500kg	5512lb
Lift capacity at full reach	250kg	551lb
Lift height	12.0m	39' 4"
Reach at maximum lift height	1.44m	4' 9"
Maximum forward reach	8.0m	26' 3"
Reach with 1 tonne load	4.00m	13' 1"
Placing height	11.42m	37' 6"

Complies with FEM stability test 4.001A